



**Cornerstone Design Studio**  
Boise, Idaho

**96%** Of wood used is FSC Certified

**92%** Of construction waste was recycled and or diverted from landfills.

**36%** Of materials used were manufactured regionally.

**LEED® Facts**  
Cornerstone Design Studio  
Boise, Idaho

LEED for Commercial Interiors  
Certification awarded May 2008

**Gold 37**

Sustainable Sites 5/7

Water Efficiency 2/2

Energy & Atmosphere 4/12

Materials & Resources 8/14

Indoor Environmental Quality 13/17

Innovation & Design 5/5

*\*Out of a possible 59 points*

The information provided is based on that stated in the LEED® project certification submittals. USGBC and Chapters do not warrant or represent the accuracy of this information. Each building's actual performance is based on its unique design, construction, operation, and maintenance. Energy efficiency and sustainable results will Vary.

## Cornerstone Design Studio

# Cornerstone Strives for Excellence

## Cornerstone Design Achieves LEED – CI Gold

### PROJECT BACKGROUND

Health and sustainability are top priorities for award-winning interior design firm Cornerstone Design. Principal Suzie Hall wanted the same principles that guide the firm's client work to guide the tenant improvement of its newly-purchased building shell. Now, Cornerstone's LEED – CI Gold studio is generating new client inquiries, showcasing design strategies, and garnering serious accolades from its employees. This studio is the second LEED - CI Gold project in the State of Idaho, and both were designed and administered by Cornerstone.

### A SOUND INVESTMENT

Creating a healthy, beautiful work environment was Cornerstone Design's primary goal. Since the firm wanted to showcase innovative design features and materials, the design team spent a good amount of time researching these applications. The resulting combination of energy efficiency, natural daylighting, efficient solutions and dynamic materials has exceeded even the design team's expectations.

### STRATEGIES AND RESULTS

To demonstrate that green can be gorgeous by skillfully designing a beautiful interior environment that is filled with sustainable strategies and materials.

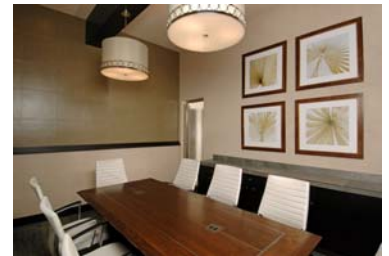
- Design floor plan to maximize daylight and views in work areas, including adding 4 skylights to existing roof.
- Reduce water consumption by over 30% better than code.
- Reduce energy consumption to less than code.
- Achieve all attainable site credits.
- Divert over 90% of construction waste.
- Attain both credits for recycled content in materials.
- Specify only FSC-certified wood – achieved 95.8% in Exemplary Credit.
- Meet all low-emitting credit requirements, resulting in the healthiest indoor air quality environment possible.
- Achieve all Daylighting, Views, and Innovation credits.
- Use only Energy Star certified computers and equipment.
- Regional material used total 42% in the project – another Exemplary Credit.
- Created and instituted a Green Housekeeping program.
- Showcase cradle to cradle certified products, which garnered an innovation Credit: Steelcase Answer Workstations and Think Chairs, Shaw EcoWork carpet tiles, and Mechoshade Ecoveil Shades.
- Achieved 37 out of 38 credits attempted.

### ABOUT CORNERSTONE DESIGN

Our experienced team has designed a multitude of projects in varying markets, including corporate, mixed-use, medical, hospitality and residential environments since 1992. Our attention to the big picture while focusing on the details ensures an integrated approach to each project. We enjoy working as part of a team, leading a team, or anywhere in between.

“LEED-CI Gold Certification gives us a great sense of pride in what we accomplished and lets our clients know that we really do “walk the talk.” The knowledge and first-hand experience we gained through the process is invaluable.”

Suzie Hall, ASID, LEED AP, President



Interior Designer and LEED Administrator:  
Cornerstone Design

Commissioning Agent: Musgrove Engineering

Contractor: Dave Evans Construction

Project Size: 2306 square feet

### ABOUT CHAPTER

The U.S. Green Building Council Idaho Chapter is a diverse group of individuals seeking to promote sustainable design in the State of Idaho.

Our group is made up of architects, engineers, contractors, government officials, product manufacturers, students, and more.



[www.usgbcidaho.org](http://www.usgbcidaho.org)  
[info@usgbcidaho.org](mailto:info@usgbcidaho.org)